



MY FINANCIAL PLEDGE TO St Luke the Evangelist Parish – Blackburn South St Timothy's Parish – Forest Hill

Please tick:

Surname: _____ Given name: _____ Postcode: _____
 Address: _____ Suburb: _____ Phone: _____
 Email: _____ Mobile: _____
 My age group is: under 20 20-29 30-39 40-49 50-59 60-69 70-79 80-89 90+

Credit Card
 Please debit my Credit Card with the sum of: \$ _____
 every month quarter half-year year
 Name on Card: _____
 Please tick  
 Expiry Date: ____/____/____

I understand that I may cancel this authority in writing at any time.
 Signature: _____ Date: ____/____/____

Direct Debit (from a nominated bank account – forms available from the Parish Office)
 My financial pledge will be: \$ _____
 every month quarter half-year year
Envelopes (envelopes available from the Parish Office)
 My financial pledge will be: \$ _____
 every week month quarter half-year year

Our Privacy Commitment
 The information collected on this card is for Parish information and use only. Be assured that Parish First P/L and our Parish are committed to upholding and maintaining the Privacy Principles and Legislative requirements as set out in the Statutory Regulations of the Australian and State Governments. This relates particularly to the gathering, recording, storing and disclosure of information relating to parish operations and the provision of religious and pastoral care services. We will never disclose your personal information to other third parties for other fundraising purposes without your consent.

- HOW DO WE FUND THESE VITAL PRIORITIES?**
- Thanksgiving Income is our major source of revenue
 - Whilst donations are always helpful – we really need all parish families to make an on-going pledge commitment to the Thanksgiving Program
 - We prefer a monthly direct debit or credit card deduction – but the traditional cash envelopes are also available
- YOUR PRESBYTERY PLEDGE**
- We also give you the opportunity to pledge to the Presbytery
 - Your pledge will support Fr Gerard, the Priests Retirement Foundation, disadvantaged priests of the Archdiocese, and assist the Archbishop and Bishops
 - We ask for your generous support

- HOW MUCH SHOULD I PLEDGE?**
- We simply ask that you contribute to the very best of your ability. How do you use your discretionary income? Is parish and presbytery support a financial priority for you?
 - We unashamedly ask those with the greatest capacity to contribute the most
 - We reserve special thanks for those on restricted incomes – your continued support is greatly appreciated



Produced by Parish First P/L based on information supplied by St Luke the Evangelist Parish – Blackburn South and St Timothy's Parish – Forest Hill

Cover image: Used with the permission from artist, Mina Roller

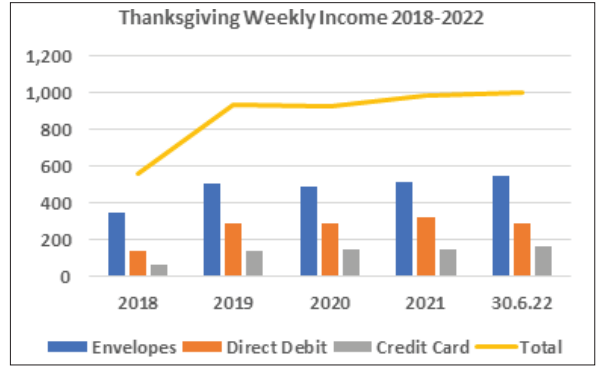
OUR FINANCIALS

- ST LUKE'S FINANCIALS**
- We have just returned to a modest surplus after the 2 years of COVID-19
 - We need to increase Thanksgiving Income to meet our obligations & priorities

INCOME

ITEM	2019	2020	2021
Thanksgiving	55,000	52,000	55,000
Rental	20,000	8,000	17,000
Other	11,000	9,000	5,000
Government Assistance*		97,000	20,000
Total	86,000	166,000	97,000

*Temporary assistance during COVID-19



EXPENDITURE

ITEM	2019	2020	2021
Property	40,000	25,000	32,000
Administration	24,000	31,000	24,000
Staff	21,000	62,000*	21,000
Pastoral	6,000	4,000	3,000
Diocese Levies	18,000	5,000	7,000
Total	109,000	127,000	87,000

*Temporary assistance during COVID-19

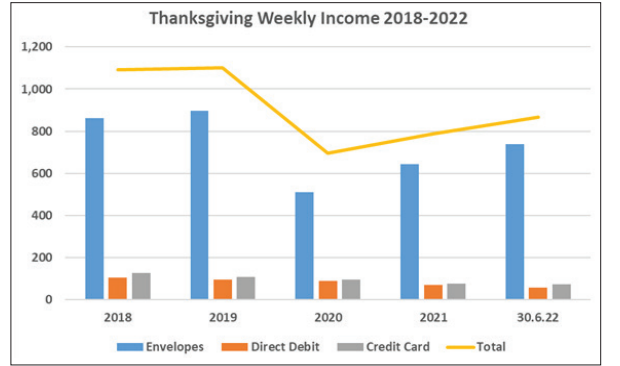
WHAT WE ASK OF YOU
 Our **BIG** challenge in this Program is to increase **PLEDGED THANKSGIVING CHALLENGE** from **\$1,000 to min of \$1,300 per week**

- ST TIMOTHY'S FINANCIALS**
- Like St Luke's, we have just returned to a modest surplus after the 2 years of COVID-19
 - We need to return Thanksgiving Income to 2019 levels if we are to meet our obligations & priorities

INCOME

ITEM	2019	2020	2021
Thanksgiving	61,000	42,000	44,000
Rental	2,000	21,000	43,000
Other	4,000	6,000	1,000
Government Assistance*		54,000	
Total	67,000	123,000	88,000

*Temporary assistance during COVID-19



EXPENDITURE

ITEM	2019	2020	2021
Staff	38,000	33,000	31,000
Administration	15,000	11,000	20,000
Property	33,000	15,000	20,000
Pastoral	2,000	2,000	2,000
Diocese Levies	7,000	5,000	7,000
Total	95,000	66,000	80,000

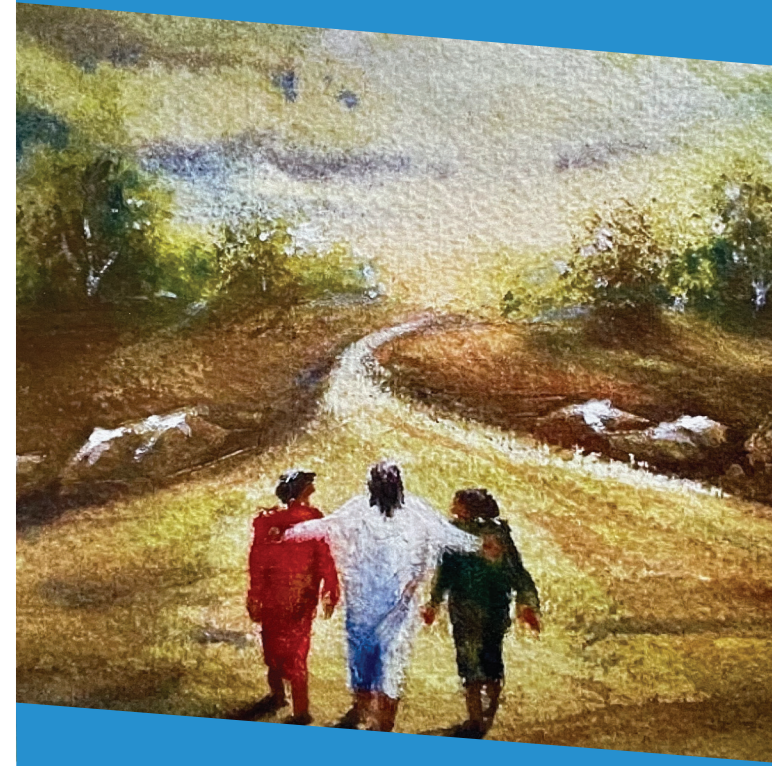
*Temporary assistance during COVID-19

WHAT WE ASK OF YOU
 Our **BIG** challenge in this Program is to increase **PLEDGED THANKSGIVING CHALLENGE** from **\$850 to min of \$1,050 per week**

PARISH RENEWAL PROGRAM

St Luke the Evangelist Parish – Blackburn South
 St Timothy's Parish – Forest Hill

Two parishes, one mission – from delegation to participation



As darkness fell and the group approached Emmaus, the stranger agreed to sit down and share a meal. He took some bread, broke it, and gave it to them. In the breaking of bread, the disciples suddenly recognised the stranger as the risen Christ.

DEAR FRIENDS

Welcome to our Parish Renewal Program – a joint initiative of our St Luke's and St Timothy's communities.

We are blessed to be part of such wonderful parishes and pride ourselves on being welcoming and caring communities – ones enriched by the diversity and contributions of our people. This has never been more evident nor more appreciated than throughout these last two years of COVID-19, when this great spirit kept the heart of our parishes beating.

As we continue our journey together, our Renewal Program provides us with a wonderful opportunity to reflect on the importance of our two wonderful communities as we appreciate the past, engage in the present and plan for the future as an extended community of faith.

What are our expectations of the parishes? What are the parish expectations of us as members of our faith community? Are we content to be 'inward looking' doing just enough to maintain the status quo – or do we take up the challenge from Pope Francis to be a missionary, outward looking church that provides a warm welcome and home to all?

To do so we must make a new commitment to our role in parish life – to ensure we provide the human and financial resources for vibrant liturgy, quality pastoral care and outreach to the needy, as well as honouring our rich histories by maintaining our churches and parish facilities.

Our Renewal Program provides the opportunity to make this commitment. We invite you to be engaged in the Program and ask that through it every parishioner renew their personal commitment to coming together to celebrate Mass regularly, to serve our communities through our parish groups and ministries, and to meaningful financial support.

I invite us all to take up the challenge – and thank you in advance for your strong, on-going support.

Fr Gerard Johnson
Parish Priest



OUR FUTURE

THE WEEKEND EXPERIENCE

The 'Weekend Experience' refers to everything that happens when we come together at weekend Mass. We want it to remain the highpoint of our faith celebrations and we need to do everything possible to make it so. This is not just about our regulars and is particularly important for visitors and potential parishioners who we would like to become a part of our St Luke's and St Timothy's families. We have identified three areas key to the Weekend Experience:

- *Vibrant Liturgy* – reflective homilies, proficient Readers and Special Ministers, and quality music, which has the power to lift the spirit and speak to the soul
- *Good use of Technology* – presentations that add to our involvement and which are particularly beneficial to those unfamiliar with the structure and flow of the Mass
- *Warm Welcome* – we proudly state that we are welcoming and caring communities. We need to ensure that everything we do at the weekend reaffirms this commitment. How do we greet each other? How do we make newcomers feel at home? Would a first-time visitor to St Luke's or St Timothy's be eager to return a second time?

To ensure the continued quality of our Weekend Experience at St Luke's and St Timothy's we need your support and involvement in four key ministries:

- *Welcome Ministry* – introduce a dedicated Welcome Ministry at each weekend Mass – greeting attendees with a smile, distributing newsletters, introducing newcomers, assisting with finding spare seats at our major events at Christmas & Easter etc.
- *Music Ministry* – we would like to develop the Music Ministry, providing quality music at all weekend Masses. Do you have skills to contribute? Do you sing well, play keyboards, guitar or another instrument? If so, we would welcome your involvement in this vital ministry
- *Technology* – assist with showing the PowerPoint presentations that accompany each Mass. It's not too difficult and training can be provided!
- *Readers/Special Ministers* – more volunteers are needed for these important ministries that are central to our weekly celebrations

WHO WE ARE

We are two communities working together on our journey of faith. We are faith-filled, welcoming communities – ones enhanced by the rich diversity of our people. We believe that our lives are enriched by coming together regularly to celebrate Mass and the Sacraments. We believe that through our actions we live the values of the Gospel.

PARISH WORKS – ST LUKE'S

St Luke's Church is in a generally good condition but does require some work to keep it in that state. In recent times we have completed essential repairs to the foundations in the SE corner of the church and some finishing work to the Reconciliation Room. We are currently completing the exterior painting of the church, with repainting of the presbytery and the Parish Hall still to be done

PARISH WORKS – ST TIMOTHY'S

St Timothy's Church does require some work. We have recently upgraded the church switchboard and are in the process of upgrading light security. Since the last Parish Renewal Program we have prioritised improving the comfort of parishioners at Mass installing a reverse cycle heating system. The old hydronic system and blow heater are currently being removed. We also need to install an independent water supply, metered separately to the Parish School and Child Care, following the establishment of the new Archdiocesan school governance structure. As another example of our two parishes working together, the work of the St Luke's gardener now extends across both parishes.

PASTORAL CARE & OUTREACH

Our challenge is how best to respond to Pope Francis' call that our parish "...be animated by a missionary spirit,



where faith is communicated and charity is seen." This will require continued investment in staff and resources, as well as YOUR support – bringing your energy, talent and commitment as we reinvigorate our parish Groups & Ministries after the last two years dominated by COVID-19. We have an aspiration to prioritise the employment of a part-time Pastoral Associate whose duties would include coordination of the Sacramental and Baptismal Preparation Programs and formation for liturgical ministries. Care for our older parishioners, through visitation to the sick, housebound and those in Aged Care remains a clear priority

FAITH FORMATION

We want to grow these opportunities and in particular – after a COVID-19 enforced break – recommence and grow a number of Programs. The RCIA Program, which initiates adults into the church is

a very important Program – we are looking for volunteers to assist Fr Gerard. We would like to recommence Children's Liturgy in both parishes – but need your support to make it possible. Our Lenten and Advent Programs also provide opportunities for faith formation and development.

OUR FINANCIAL REALITY

Both parishes have only just returned to a modest surplus after two years dominated by COVID-19. We must strengthen parish finances by increasing pledged Thanksgiving Income if we are to be able to fund our short to medium term parish priorities, move to a more stable financial footing and plan and budget with confidence for the future. We need YOUR support to do so.

